

28 April 2011
 The Companies Announcements Office
 ASX Limited

Lao March Quarter Progress

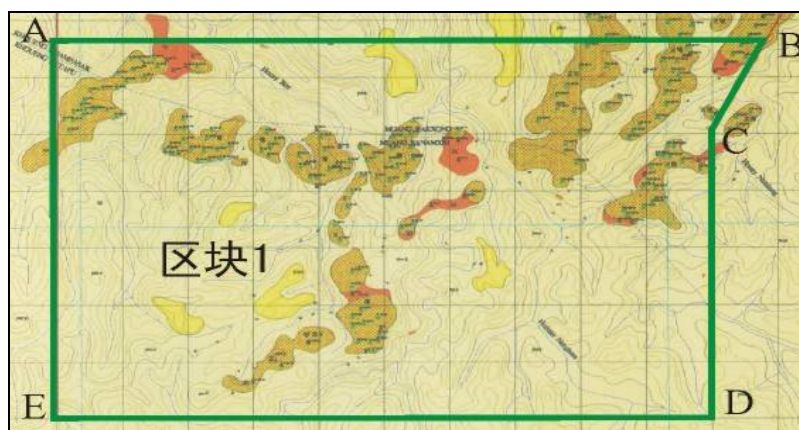
We continue to be excited by both the technical and strategic developments in this project. We are confident the global long term outlook for alumina remains strong and will improve further in the foreseeable future. We are pleased to provide a detailed update on the project's progress in the March quarter.

LSI Tenement

We focused on geological data management, sample analysis, oryctognosy survey, hydro engineering and environmental geological data management.

Tasks	Completed
Oryctognosy survey	66km ² (100% of tenement)
Sample assay	1,500 sample assayed
Density	10 sampled for density
Permeability test	10 tested for coefficient of permeability test

The tenement map below shows clearly mapped ore bodies which are easy to mine. They are accessible and have minimal vegetation or overburden. We expect LSI to be mined first to supply bauxite to the alumina refinery. The tenement has access to essential infrastructure. We are now working on the new JORC Resource Statement and feasibility report.



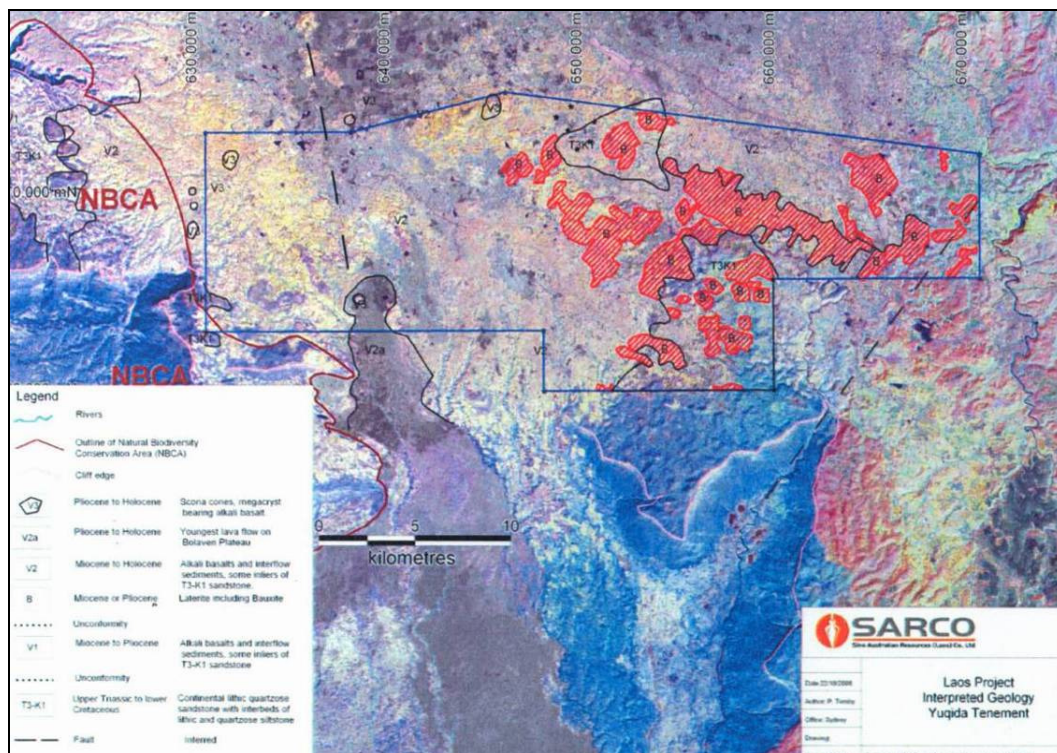
Yuqida Tenement

Our indoor activities included data management, sample analysis and map completion. Specifically we conducted sample preparation, shipping, lab test, geological data management,

survey management, hydro engineering environmental geological data management. We also conducted additional field work including drilling.

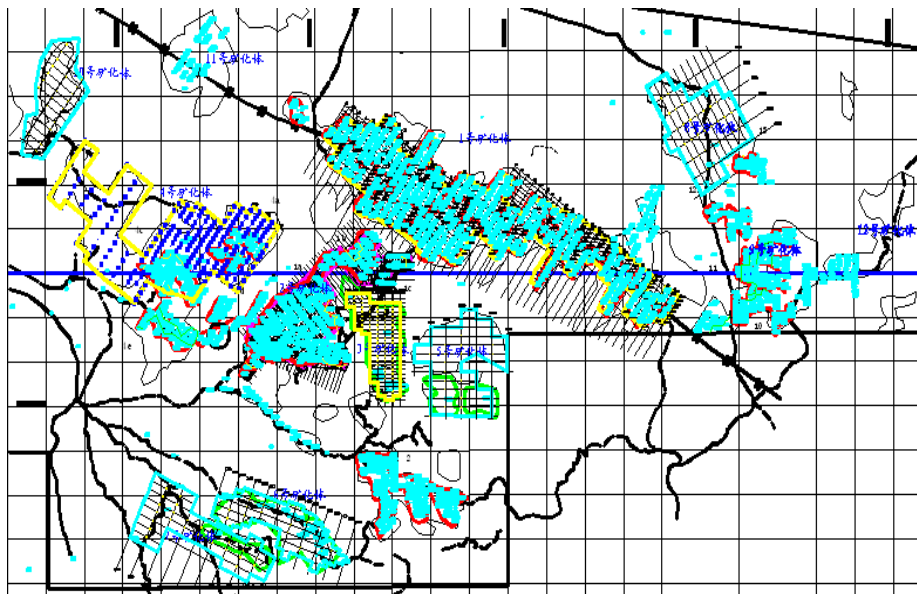
Task	Completed
Remote sensing	287km ² completed
Exploration line building	48km completed
Tenement access road rebuilding	48km rebuilt
Traverse survey	46.5km finished
Drill hole position survey	368 hole positions surveyed
Drilling	2,464.7m drilled
Logging	2,464.7m logged
Sampling	730 sample taken
Density sample test	10 samples taken

This map shows the defined ore bodies.



Yuqida Current Work Plan

Given the larger size of Yuqida, we are carrying out some additional field work in the current quarter. Based on the existing data our work plan below shows the planned overall layout of geo-engineering based on the boreholes. There will be a total of 872 boreholes and a total of 8,720m. The red color marks the former resource estimate area whose field work has been completed in the last 12 months. The yellow color marks the new resource estimate area, totaling 16.8km². The geo-engineering grid will be operated at 200m × 100m, covering 16.8km².



Yuqida has a much large area and resource than LSI. We expect Yuqida to supply future expansion of the planned alumina refinery for a long time into the future. We expect a new JORC Resource Statement from SRK Consulting.

If you have any questions please contact Frank Zhu, Head of Corporate Development via investor.relations@ord.com.au.

Frank Zhu, CFA
Ph: 61 2 8307 3877