



ORD RIVER | Resources

Ord River Resources Limited (ASX: ORD)

Suplejack Gold Project (Tanami Region, NT)

**Peter Shou
Managing Director**

25 November 2010

Disclaimer

Forward Looking Statements

These materials include forward looking statements. Forward looking statements inherently involve subjective judgment and analysis and are subject to significant uncertainties, risks and contingencies, many of which are outside of the control of, and may be unknown to the company.

Actual results and developments may vary materially from that expressed in these materials. The types of uncertainties which are relevant to the company may include, but are not limited to, commodity prices, political uncertainty, changes to the regulatory framework which applies to the business of the company and general economic conditions. Given these uncertainties, readers are cautioned not to place undue reliance on such forward looking statements.

Forward looking statements in these materials speak only at the date of issue. Subject to any continuing obligations under applicable law or any relevant stock exchange listing rules, the company undertakes any obligation to publicly update or revise any of the forward looking statements, changes in events, conditions or circumstances on which any such statement is based.

Suplejack Gold Project Overview

Targeting Significant Gold Resources

Overview	
District	Gold Mineralisation within Suplejack Downs Sandstone and the Mount Winnecke Group
Tenure	1 Granted Exploration Licence SEL 26483 (336 sq km)
Ownership	100%
Model	Structurally controlled hydrothermal gold mineralization within Lower Proterozoic Terrain
Key	Within Highly Prospective Gold Mineralized Terrain, Gold Identified, Tregony Resource Defined
Highly prospective	Paucity of Previous Exploration, Scatter of Gold Prospects, Identification of Fundamental Structural Fabrics, Outcropping Quartz Gangue Assemblage >7 Linear Kilometres



Tanami is a Well Known Gold Region

Existing Production Basin and Infrastructure

Tanami is a well know gold region. **Total mineral inventory exceeds 7million ounces.** The following substantial gold producers and explorers operate actively in the region:

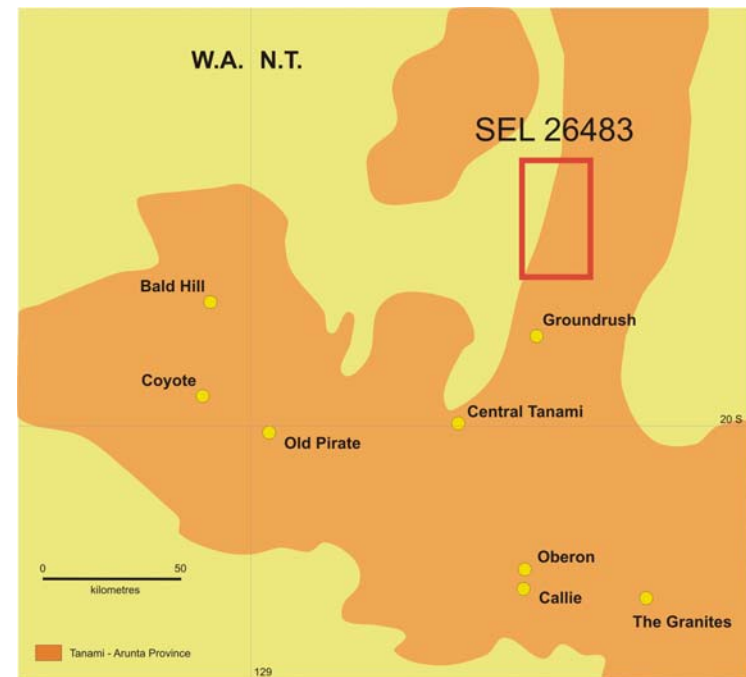
- ★ Newmont Australia Ltd
- ★ Tanami Gold N.L
- ★ ABM Resource Ltd

Typical Deposit Styles

- Structurally Hosted Greenschist to Amphibolite Facies Metamorphosed Sediments & Volcanics
- Hydrothermal Fluid Associations
- Predominantly Sheeted Quartz Veins & Breccias

Deposit Geological Criteria

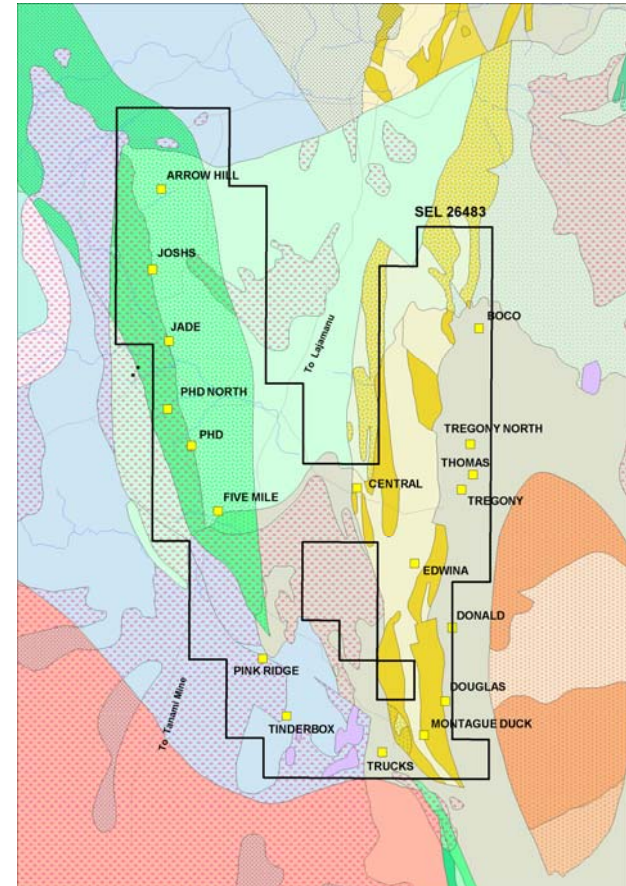
- Proterozoic Aged Rocks
- Proximity to Felsic Intrusives
- Adjacent to Intersection of Significant Structures
- Multi-Stage Fracturing, Brecciation, & Gangue Influx



Tanami Region Gold Resource Inventory (2010).

Suplejack's Advantages

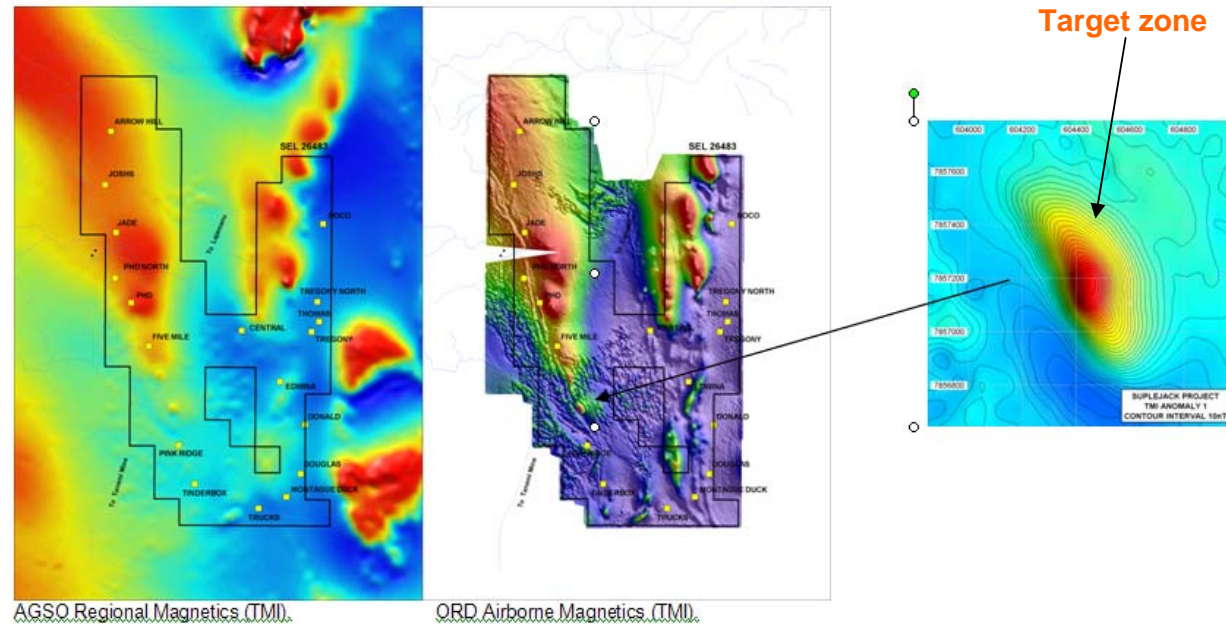
- ★ Project situated within Highly Mineralized Terrain within Tanami Goldfield
- ★ Identified Gold Mineralization at **Tregony Prospect**, & **Five Mile Bore Prospect to PhD North Prospect**
- ★ Previously defined Tregony Prospect **50,000oz Gold Resource**
- ★ **5 km Strike Continuity of Gold-Bearing Silicified Brecciated Quartz Assemblage** between Five Mile Bore Prospect and PhD North Prospect
- ★ Extensive Area of Cover Sequence obscuring **extensions** to Identified Gold Prospective Zones
- ★ Postulated **Extensions** to Tregony Gold Mineralization westward towards Central Prospect
- ★ Minimal Sub-Surface Evaluation of other Gold Prospects
- ★ Good Access
- ★ Supportive Pastoral Landowner
- ★ **No Native Title Issues & Access Restrictions**
- ★ Access to surrounding gold production and processing infrastructure



Successful Airborne Survey Completed in November

Significantly Increased Prospectivity

- ★ Gross Differences in Regional & Prospect Scale Detail
- ★ Significantly Improved Geological Understanding
- ★ **Significantly Improved Control of Surface and Sub-Surface Geological Lithologies & Structures**
- ★ Identification of Geological Unit Continuities & Displacements
- ★ Identification of Potential Near Surface Prospective Geological & Structural Repetitions
- ★ Identification of Potential Near Surface Prospective Buried Geophysical Anomalies
- ★ **Significantly Increased Prospectivity**

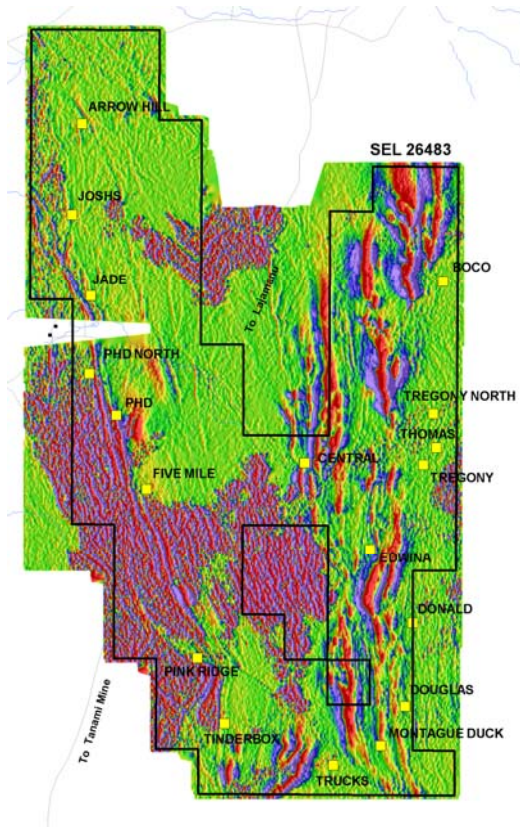
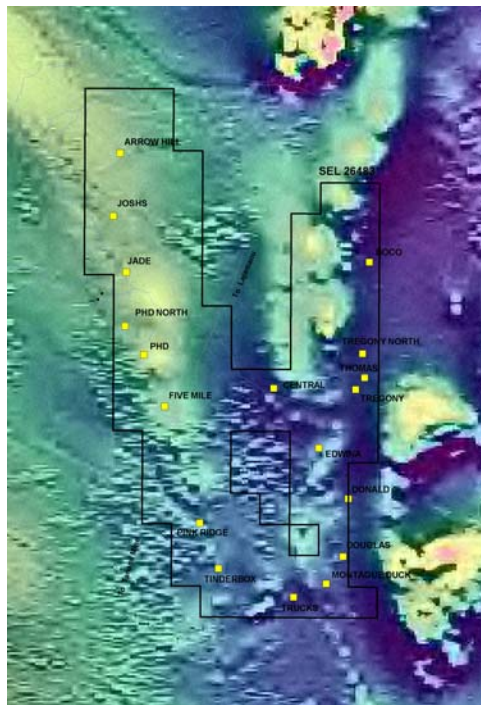


Airborne – Filtered Airborne Magnetic Data Images

Clearer Picture of Depth Prospectivity

- ★ Filtered Airborne Magnetic Data – 1 Vertical Derivative removes surface magnetic effect to provide a clearer picture of depth prospectivity. (see interpretation slide for comments)

Old – AGSO Regional Magnetics (1VD) **New – ORD Airborne Magnetics (1VD).**

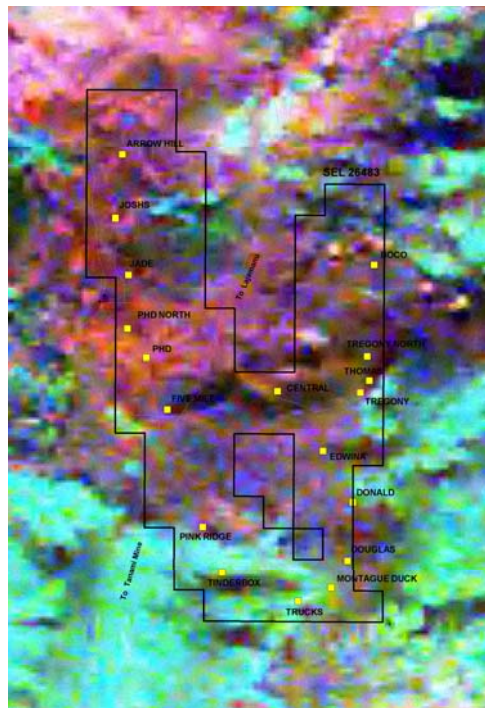


Airborne - Filtered Radiometric Data Images

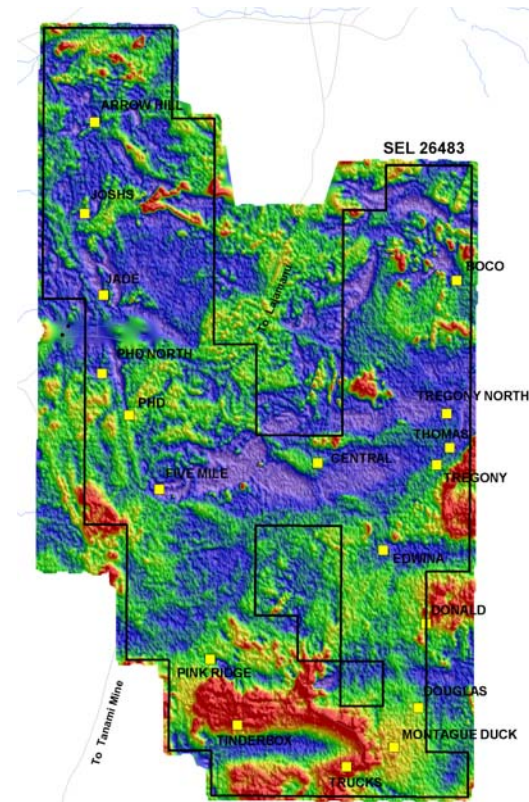
Clearly Identified Rock Types and Geology

- ★ Focusing on surface radiometric responses in the survey. Help identify rock types and geology trends. (see interpretation slide for comments)

Old – Regional Radiometrics (Total Count)



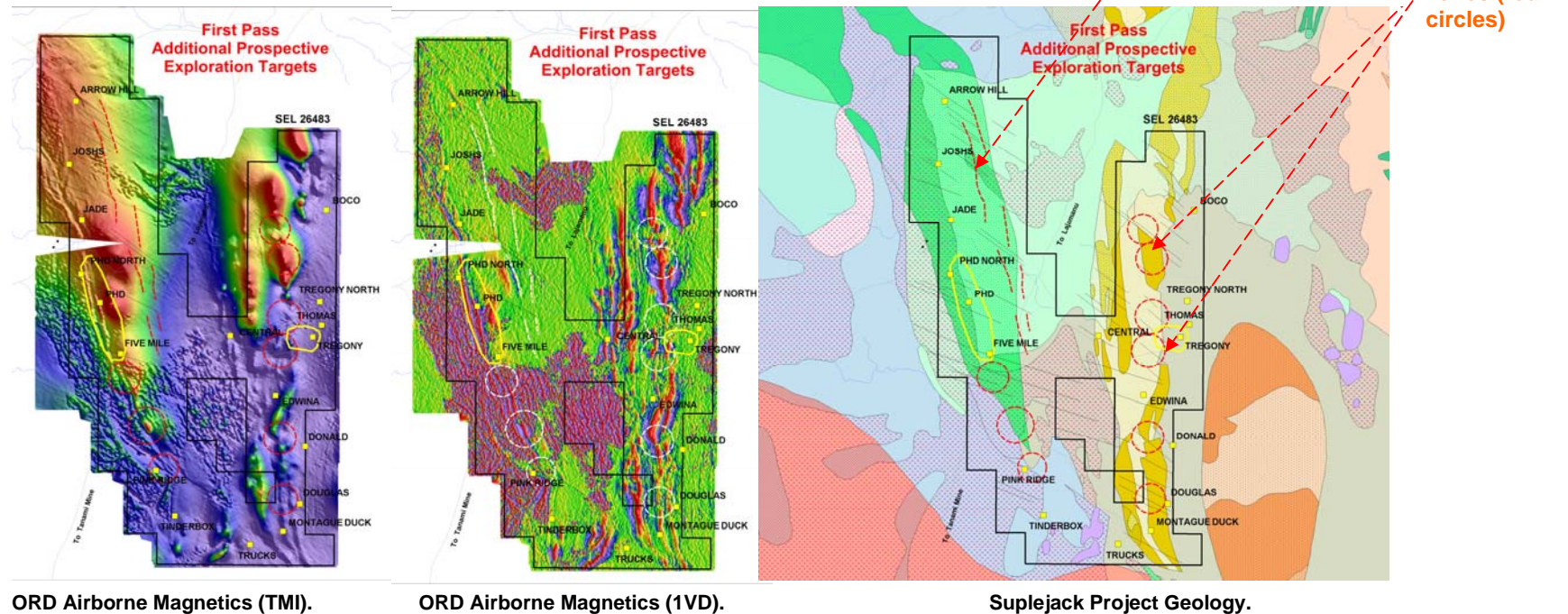
New – ORD Radiometrics (Total Count)



Interpretation of Airborne Magnetic Survey Data

New Exciting Prospective Zones Identified with Potentially More

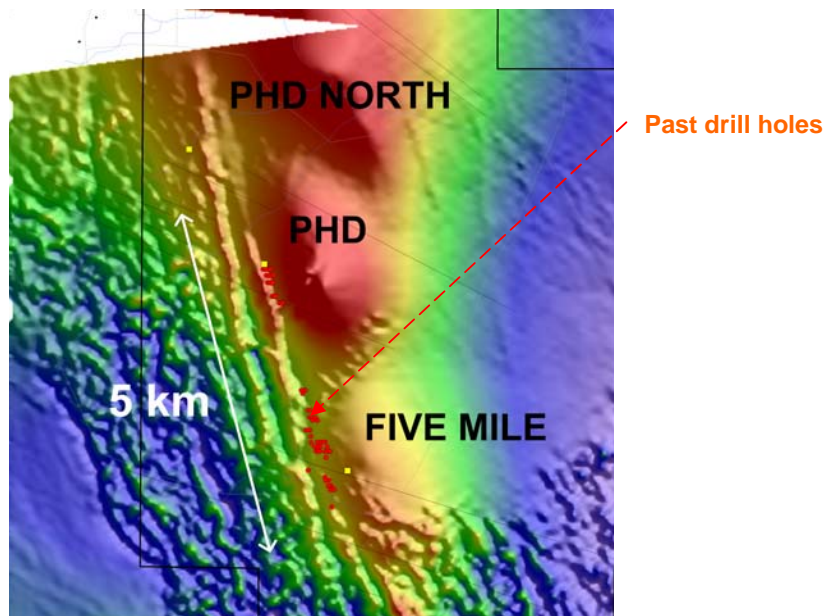
- ★ Survey clearly highlights additional gold prospective zones (red circles on the graphics)
- ★ Structural corridors (red parallel lines) have now identified to be potential new prospective zones
- ★ Clearly defines the geology of the tenement and the geology of the prospective zones.
- ★ Within existing prospective zones, the potential mineralization areas are now larger
- ★ In summary, interpreting the data has increased ORD's confidence significantly in the overall prospectivity throughout the entire Suplejack Gold Project.
- ★ **Composite Interpretative base to Significantly Improve Drill Target Definition**



Target Zone Priority 1: Five Mile Bore to PhD North

Targeting Significant Gold Resource Increase

- ★ Total 69 Previous ORD Drillholes
- ★ In Excess of 7 Linear Kilometers of Semi-Continuous Quartz Gangue Assemblage
- ★ Gross Brecciation, and Re-Brecciation
- ★ **Quartz Breccia to 55m True Width and more than 4km in length**
- ★ Recent Geological Field Investigation coupled with Re-Evaluation of ALL Drilling Data suggests future drillholes should be drilled to the east
- ★ **Potential for multiple auriferous lenses (akin to Tanami Mine Ore Lenses)**
- ★ Gold Mineralization most likely associated with one or more episodes of Structural Modification & Associated Brecciation



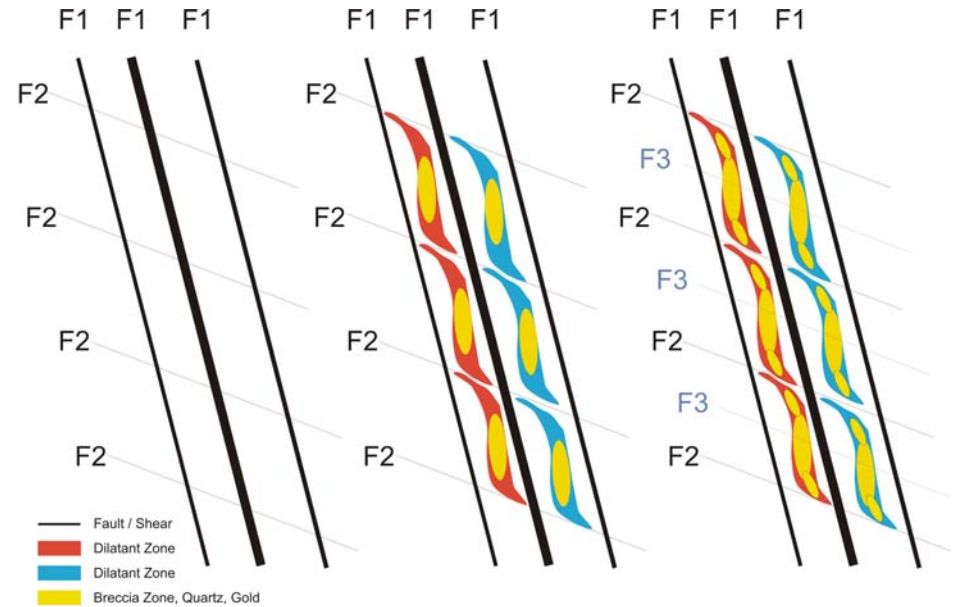
ORD Airborne Magnetics (TMI), highlighting previous Drill Collar Locations.



PhD Prospect Auriferous Silicified Breccia Outcrop.

PhD Prospect Structural Model

1. Structural development of suitable depositional environments for gold mineralization
2. Multi-stage & continuous structural modification
3. Multi-stage deposition of auriferous siliceous gangue assemblages
4. Apparent continuity of siliceous assemblages & consequences for :
 - Drilling Programs
 - Technical Workers
 - Tonnage / Grade & Auriferous Lens Continuity Expectations
 - Gross Gold Resource Expectations



Mineralization Potential

1. High Prospectivity for Significant Gold Mineralization along the Five Mile Bore to PhD North Corridor
2. High Probability to Increase Gold Resource at Tregony
3. Interpreted semi-parallel Auriferous Structural Corridors adjacent to the West and East of the Five Mile Bore – PhD North Corridor
4. Interpreted Western Extension to Tregony Gold Mineralization
5. Interpreted Significant Structurally Complex Zones with High Potential for Hosting Gold Mineralization

2011 Drilling Program Plan

We will Update the Market on Finalised Drilling Details

2011 Drilling Program Plan	
31-Dec-2010	Completion of 'in-house' Geological & Structural Interpretation of Airborne Magnetic & Radiometric Survey Data
31-Dec-2010	Completion of Geophysical Source Modeling of Airborne Magnetic & Radiometric Survey Data
15 days	Development of Rigorous Drilling Database
30 days	Field Prospecting of all Prioritized Prospective Areas (Geological, Geophysical, Geochemical)
Commencement of 2011 Dry Season	1. Phase 1 RC / Diamond Drilling Program <ul style="list-style-type: none"> ▪ Five Mile Bore to PhD North prospective area: ~5,000m RC Drilling to 100m (vertical) over 5km Strike Length ▪ Tregony – Edwina – Central prospective area: ~3,000m Diamond Drilling to 200m (vertical) within Tregony Resource Zone: ~5,000m RC Drilling to 100m (vertical) within Prospective Western Extension Zone ▪ Additional areas as warranted subsequent to field reconnaissance exploration: ~ 3,000m RC Drilling to 100m (vertical) ▪ Possible Aircore Drilling or Vacuum Geochemical and Geological Drilling of covered near-surface Prospective Areas: ~ 2,000m
	2. Phase 2 RC / Diamond Drilling Program <ul style="list-style-type: none"> ▪ Five Mile Bore to PhD North prospective area: ~5,000m RC / Diamond Drilling to 300m (vertical) within Auriferous Zones ▪ Tregony – Edwina – Central prospective area: ~5,000m RC / Diamond Drilling to 300m (vertical) within Greater Tregony Prospect <p><i>Note: extent of drilling in 2011 is dependent on weather conditions, availability of contractors and finance.</i></p>
	3. Gold Resource Estimation Work

Deep Technical Expertise



Bob Richardson
Technical
Advisor

- 40 years experience in mineral exploration management, geophysics and exploration technology. 15 years with the Peko Wallsend Group as Chief Geophysicist and then Exploration Manager.
- Bob has been at the forefront of mineral exploration in many parts of Australia for his all of his career and has provided essential input into a number of important mineral discoveries. A founding director of PlatSearch NL in 1986 and was its Managing Director until December 2008.
- Currently a non-executive director of Crossland Uranium Mines Ltd, Western Plains Resources Ltd, Eastern Iron Ltd and Silver City Mining Ltd and provides specialised geoscience advice to mineral explorers through a consulting company GeoTangent Pty Ltd.



Robert Meade
Exploration
Manager

- Rob has significant experience in the field of Proterozoic gold and copper exploration in the Northern Territory, Western Australia and Queensland, and Palaeozoic intrusive-related copper-gold mineralization exploration within eastern Australia.
- Rob, from his tenure at Geopeko Ltd and later North Limited has gained intimate knowledge of the Tanami region where ORD has a gold exploration project named Suplejack.
- Robert has held senior exploration and geologist positions in the following companies:
 - Head of Exploration, Hindustan Zinc Limited;
 - Exploration Consultant, Pacific Rim Resources;
 - Chief Geologist, Dalton Pacific Resources (Oxiana Limited);
 - Project Manager, Barramundi Gold Ltd;
 - Senior Project Geologist, North Limited; and
 - Exploration and Underground Mine Geologist, Geopeko Ltd