



ORD RIVER Resources

Ord River Resources Limited

**A Turnaround Story Underpinned by Quality Assets
and Supported by a Strong Chinese Partner**

July 2009

*Peter Shou
Managing Director*



Contents



- Corporate Profile
- New Leadership Focusing on Creating Shareholder Value
- A Strong Partner in CNMC
- 3 Quality Projects



Background

- Established in May 2004 and as a private company ORD explored for precious metal and base metal. It raised an initial A\$4m before its IPO in February 2005 which raised a further A\$4.8m
- In November 2004 ORD issued A\$2m convertible note to *China Nonferrous Metals Int'l Mining Co., Ltd (CNMIM)* which converted into shares in the IPO. CNMIM is a subsidiary of *China Nonferrous Metals Mining (Group) (CNMC)*, one of the largest mining companies in the world
- ORD's founding assets are grouped into two projects, Copper Flats in Western Australia and Suplejack Gold Project in Northern Territory
- CNMIM and ORD entered into a co-operation agreement in 2004 which subsequently resulted in a JV in the Laos bauxite project in September 2006



Capital Structure

- Current market capitalization: A\$9million
- Shares on Issue: 314,151,411
- Current share price A\$0.03
- Options on issue: 83,386,646 with exercise prices ranging from A\$0.05 to A\$1.00 a share
- Last public offering was done at A\$0.125 a share in September 2008 for A\$3million underwritten by CommSec (part of Commonwealth Bank of Australia)
- Cash balance at 30 June 2009: A\$1.5million



Share Price Performance





Why the current low share price?

- The low share price reflects more than just the impact of the global financial crisis.
- Previous management did not sufficiently develop the projects in time to take advantage of the past bull market conditions.
- Past high cash burn rate depleted the Company of funds.
- Previous lack of strategic focus on the quality projects.
- Diversion of energy by previous management to other businesses.
- Poor communication with the wider investment community.

New Leadership Focusing on Creating Shareholder Value



Leadership Team

Luo Tao

Non-Executive Chairman



- A senior economist with over 30 years experience in the nonferrous metals industry in China
- He is also the Chairman of China Nonferrous Metals Int'l Mining Co., Ltd. (CNMIM) and President of China Nonferrous Metals Mining (Group) Co. Ltd (CNMC).
- He was a Vice Director of Beijing General Research Institute for Nonferrous Metals, Chairman of Committee of Supervisors and Vice President of Aluminium Corporation of China Ltd (CHALCO).

David Weili Tang

Non-Executive Director



- President of China Nonferrous Metal Int'l Mining Co., Ltd. (CNMIM)
- In the early 1990s he pioneered the trading system for the first nonferrous metals future commodity exchange in China.
- He has worked for several years in Canada in the investment management and consulting industry.

Peter Shou

Managing Director



- Over 15 years experience in the resources and energy industries and real estate development.
- He has held executive roles in minerals economics, strategy analysis, project development, risk management and corporate finance.
- He has worked extensively with government and in the private sector in China, South Asia, North America and South America across government and business levels.
- He has worked closely with China's Jianxi Copper Company and has been involved in multiple merger and acquisition transactions in the mining industries of Australia and North America.

New Leadership Focusing on Creating Shareholder Value



Leadership Team

Patrick Sam Yue
Executive Director



- 20+ years experience in financial and corporate management in Australia holding senior financial executive and company secretary positions with companies listed on Australian Securities Exchange.
- Worked with the big four accounting firms in the Middle East, London and Africa.

Bob Richardson
Technical Advisor



- 40 years experience in mineral exploration management, geophysics and exploration technology. His career includes 15 years with the Peko Wallsend Group as Chief Geophysicist and then Exploration Manager.
- Bob has been at the forefront of mineral exploration in many parts of Australia for his all of his career and has provided essential input into a number of important mineral discoveries. He was a founding director of PlatSearch NL in 1986 and was its Managing Director until December 2008.
- He is currently a non-executive director of PlatSearch NL, Crossland Uranium Mines Ltd, Western Plains Resources Ltd, Eastern Iron Ltd and Silver City Mining Ltd and provides specialised geoscience advice to mineral explorers through a consulting company GeoTangent Pty Ltd.

Frank Zhu
Head of Corporate
Development



- 13 years experience in funds management and investment banking
- Frank led the Principal Origination Group in Investment Banking Division at Goldman Sachs in Australia. He was involved in over A\$10bn in infrastructure and utilities transactions
- Frank managed over A\$130m of international equities at Australian Ethical Investment Limited and A\$150m in infrastructure investments in Australia
- Frank is a CFA Charterholder and holds a Master of Commerce in International Business from University of New South Wales



New Managing Director Peter Shou



- Peter Shou joined the board as a non-executive director on 24 March 2009. Peter became Managing Director on 5 June 2009
- Peter brings a successful track record in resources and corporate activities
- Peter was instrumental in the successful placement of shares that raised A\$1.25m in new capital when he joined
- Peter and his new leadership team have the full support of large shareholders including CNMIM. CNMIM's confidence was demonstrated by Mr. Luo Tao the President of CNMC becoming Non-Executive Chairman of ORD
- Board restructured from March 2009



Focus on creating shareholder value

- Under Peter's leadership, ORD management team is 100% focused on creating shareholder value by:
 - Tight cost control. e.g. a reduction of A\$70k a month in normal ongoing business costs achieved already
 - Delivering results on existing projects
 - Working closely with CNMC in Laos
 - Raising profile of ORD in the investment community
 - Winning support from local and overseas institutional investors
 - Seeking new projects at more advanced stage



A Strong Partner in CNMC



ORD is supported by CNMC



- China Non-Ferrous Metal Mining Group is one of the largest mining companies in China and in the world with operations and investments in Asia, Europe, Africa, Americas and the Pacific
- CNMIM (group member of CNMC) has an 7.5% stake in ORD
- CNMC's president is ORD's Non-Executive Chairman
- CNMC through its group member NFC is a 51% owner and joint operator of the Laos Bauxite Project
- CNMC is supporting the new leadership team in ORD
- CNMC remains committed to partner with ORD in developing new projects in Australia



Ord River Resources - three exploration projects

- Copper Flats (copper in Western Australia)
- Suplejack Gold (gold project in Northern Territory)
- Sino Australian Resources (Laos) Co., Ltd [SARCO] (bauxite in Laos)



Location map of the WA & NT Tenements

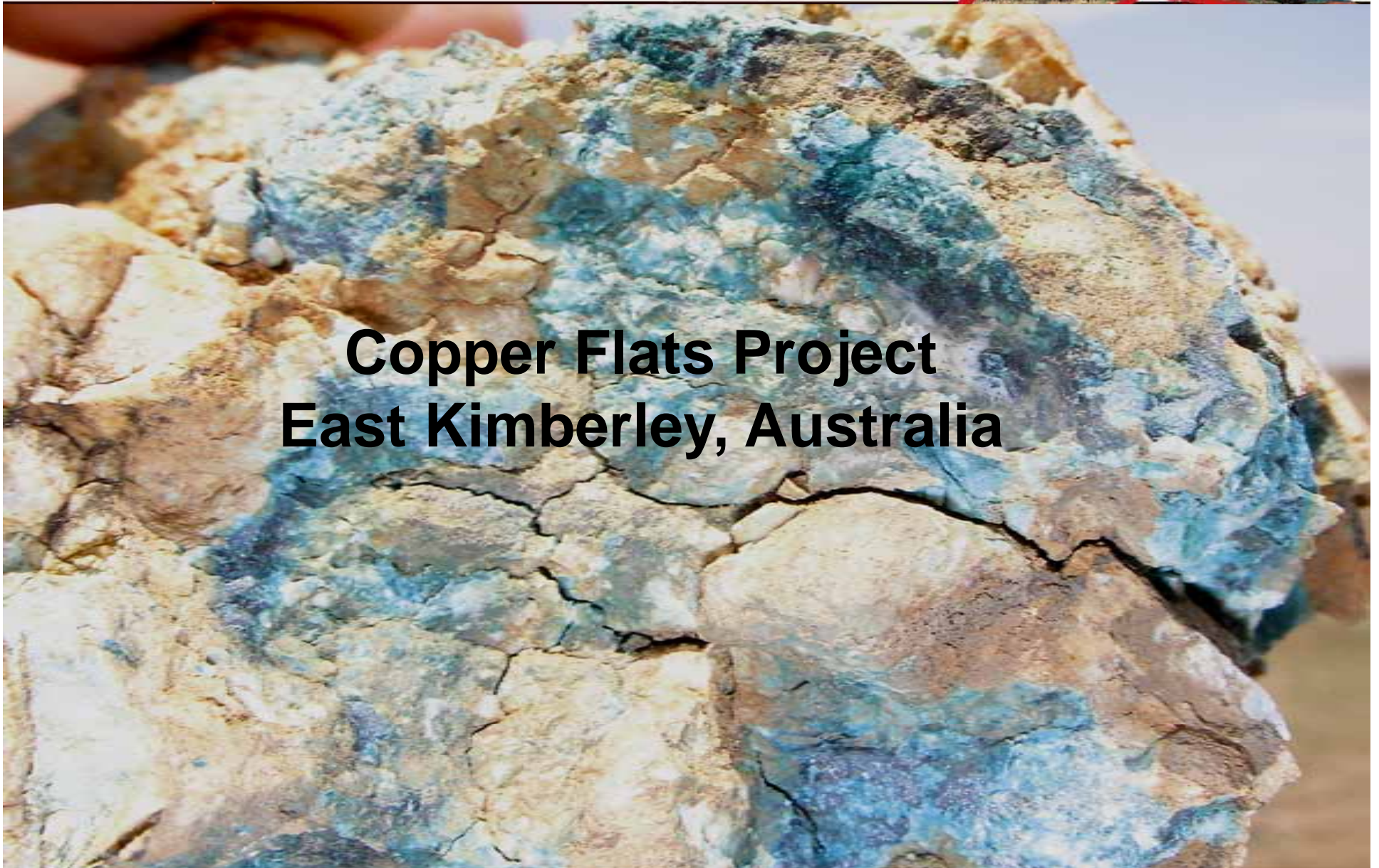




ORD RIVER Resources



Copper Flats Project East Kimberley, Australia



Overview of individual project: Copper Flats



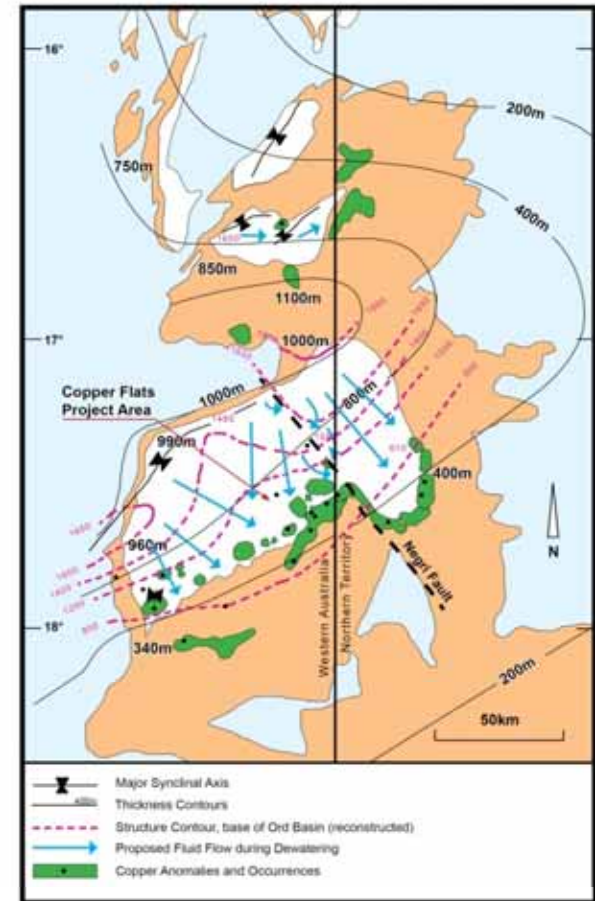
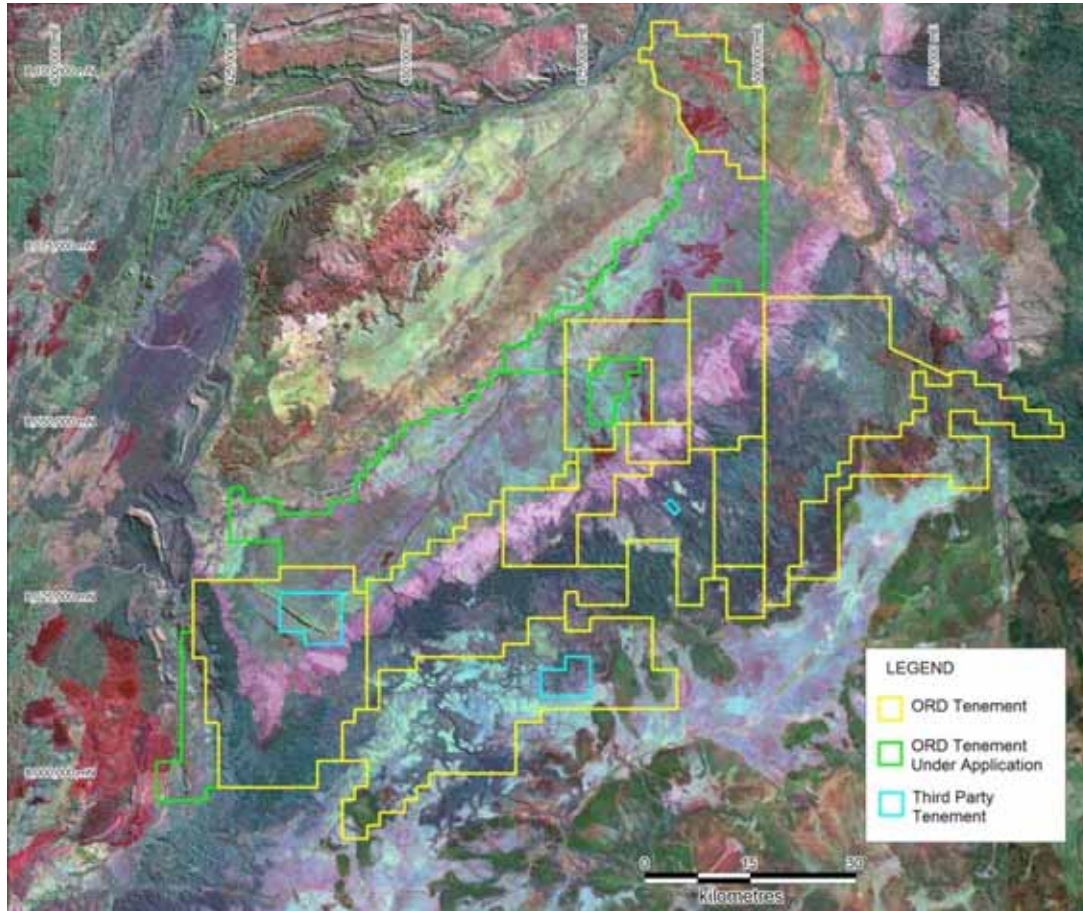
Copper Flats is a potentially very significant copper project on the WA / NT border

- Ord currently holds tenements over an area of 5,866 km² in the East Kimberley region of WA and NT. Applications submitted to extend area by another 1,000 km²
- Rock chip samples taken in November 2006 from various locations at the tenements contain percentages up to 42.5% copper. The Company started a drilling program in mid-2007 to determine the grade and style of the deposits with results confirming the potential but not finding economic size deposits
- The project area has very similar geology and style of mineralisation to the highly productive Michigan Copper Belt (9 million tonnes Cu metal) and modelling of published and Company information has identified the areas with highest potential.
- An extensive airborne magnetic and radiometric survey has been completed on 9 July 2009 covering 23,479 line Kms. Data interpretation to be completed in the next 2 months
- Ord's Chinese Partner CNMC brings access to the enormous Chinese metals market and upgrades potential for joint development



Copper Flats Tenements

ORD RIVER Resources



Modelling of Mineralized Fluid Flow



Copper Flats Geology



- Structurally controlled dewatering features found associated in many cases with copper mineralisation
- Structurally controlled vein sets may be the tops of deeper resources similar in scale to the deposits in the Michigan Copper Belt
- Geology and basin scale, metamorphism and mineralisation in the Copper Flats area and the Michigan Copper Belt are very similar
- Resources in the Michigan Copper Belt were approximately 9 million tonnes of copper metal



ORD RIVER Resources

Suplejack Gold Project Tanami Desert, Northern Territory



Overview of individual project: Suplejack Gold



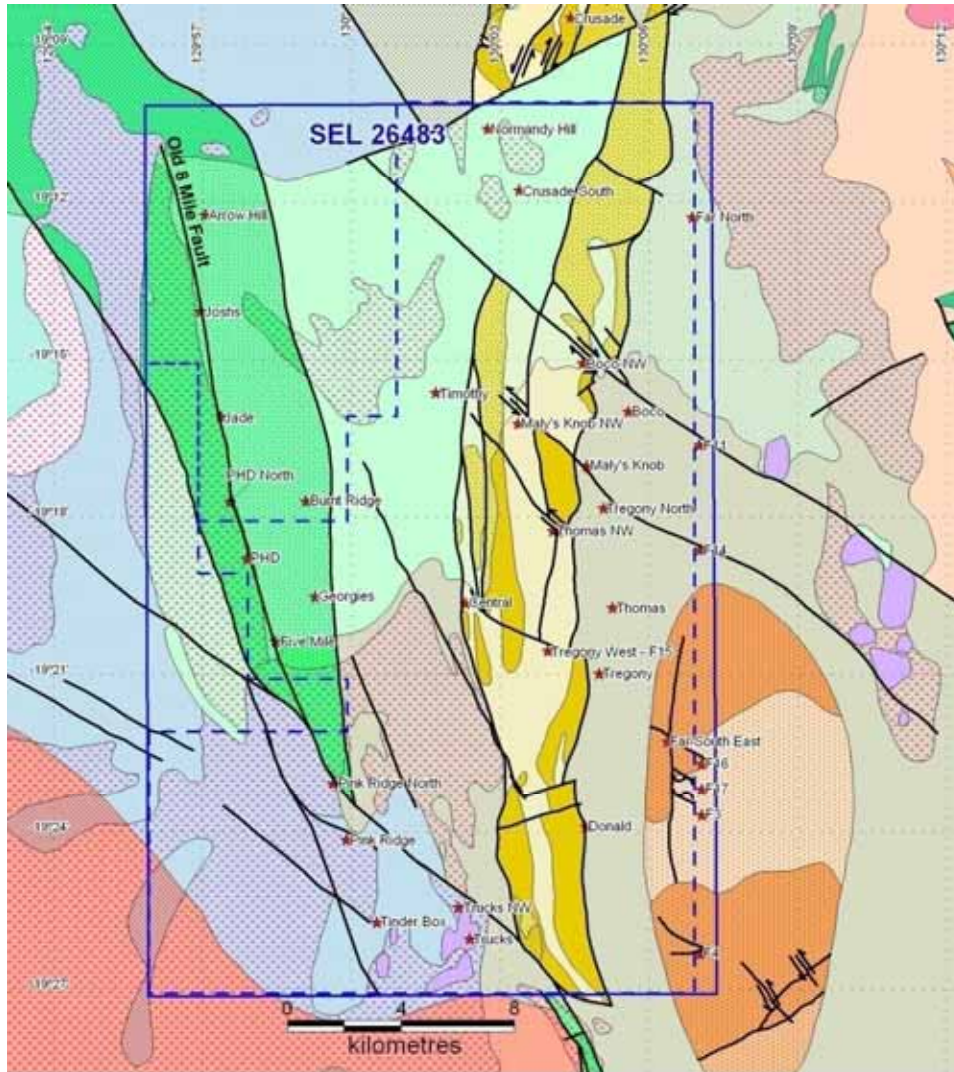
Suplejack Gold project in Northern Territory with substantial potential

- The project is located approximately 650 km north-west of Alice Springs, Northern Territory, approximately 80 km north of the Tanami mine and 40 km north of the Groundrush mine.
- Ord holds a granted tenement covering 659 km², and a JORC compliant inferred resource of 55,000 ounces.
- The principal targets are a recently recognised structural direction for the Tregony resource coincident with anomalous soil geochemistry and a small intersection of 1 metre at 3gAu/t and the Old 8 Mile Fault that has anomalies or known mineralisation over a 25 km strike distance and is host to significant intersections at two drilled prospects that need further follow up.
- Ord interprets that there is over 200 km strike length of untested or undertested structures ,many of which are associated with known gold anomalies.

After proving sufficient resources Ord plans to have a central treatment plant that will process ore from a series of deposits, similar in nature to the Tanami mine, where over 40 open pits have contributed ore to the central processing plant.



Suplejack Tenement



Drilling on one of the many highly prospective structurally controlled prospects in the tenement



Bolaven Plateau Bauxite Project



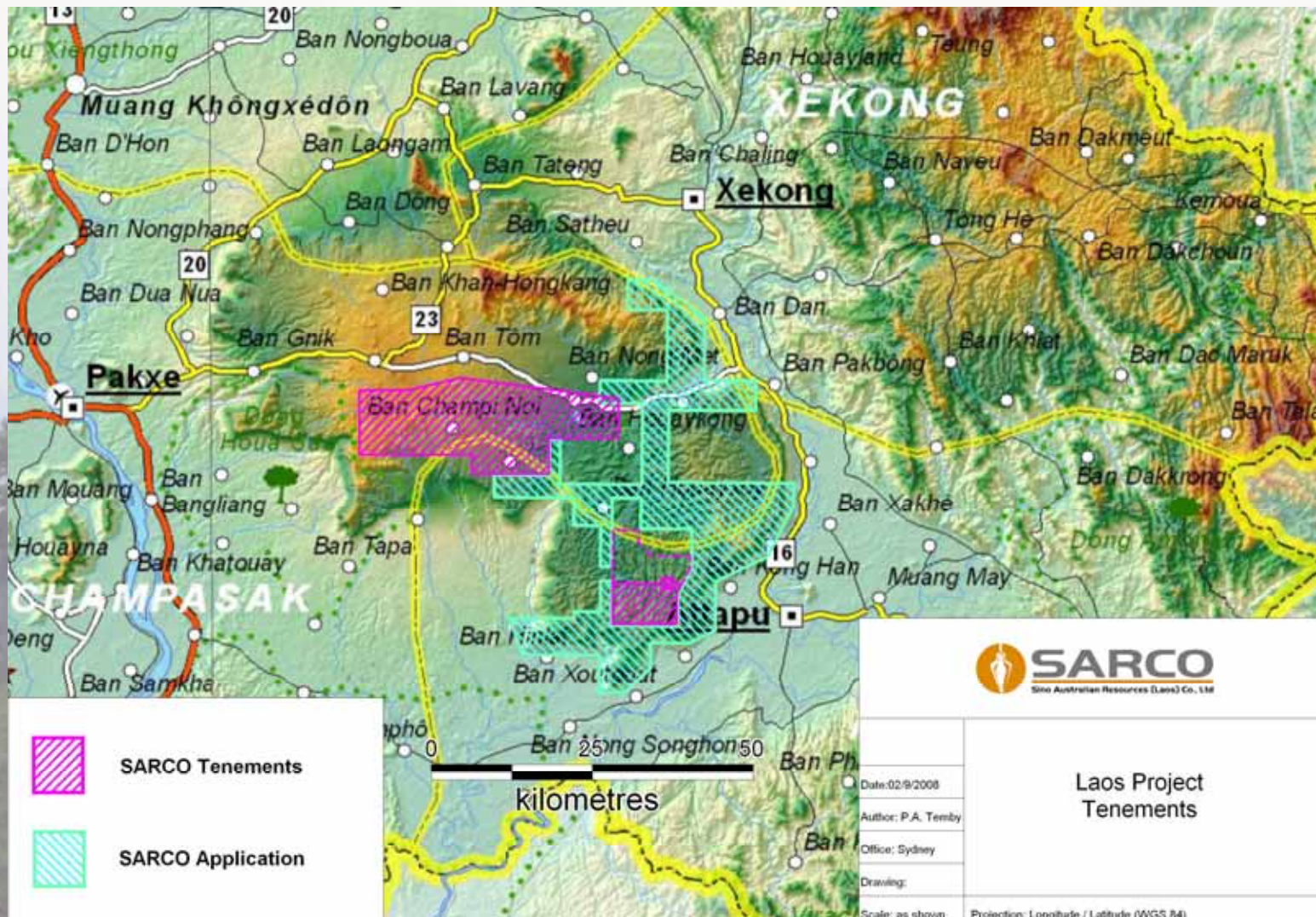


BOLAVEN PLATEAU

Bolaven Location

- The Bolaven Plateau is located in southern Lao PDR in Champasak Province
- Closest town is Pakse which is second largest city in Lao PDR, about 700 km by road from Vientiane

SARCO Tenements



Overview of individual project: SARCO - background



Large bauxite project in Laos

- SARCO operates a JV bauxite project in Southern Laos (Ord River Resources [Ord] 49% and China Nonferrous Metal Industry's Foreign Engineering and Construction Co. Ltd [NFC] 51%). NFC (group member of CNMC) is a publicly listed company on the Shenzhen Stock Exchange and is China's international engineering contractor for the Chinese nonferrous metal industry, having successfully constructed more than 60 projects in around 25 countries since its establishment in 1983.
- SARCO currently has rights to 2 tenements over an area granted of 574 km². Application for an additional 867 km² tenement is in final stage of approval. When all tenements are granted SARCO will have access to over 1,400 km²
- The bauxite potential, in the areas of interest to Ord, is estimated to be up to 2 billion tonnes

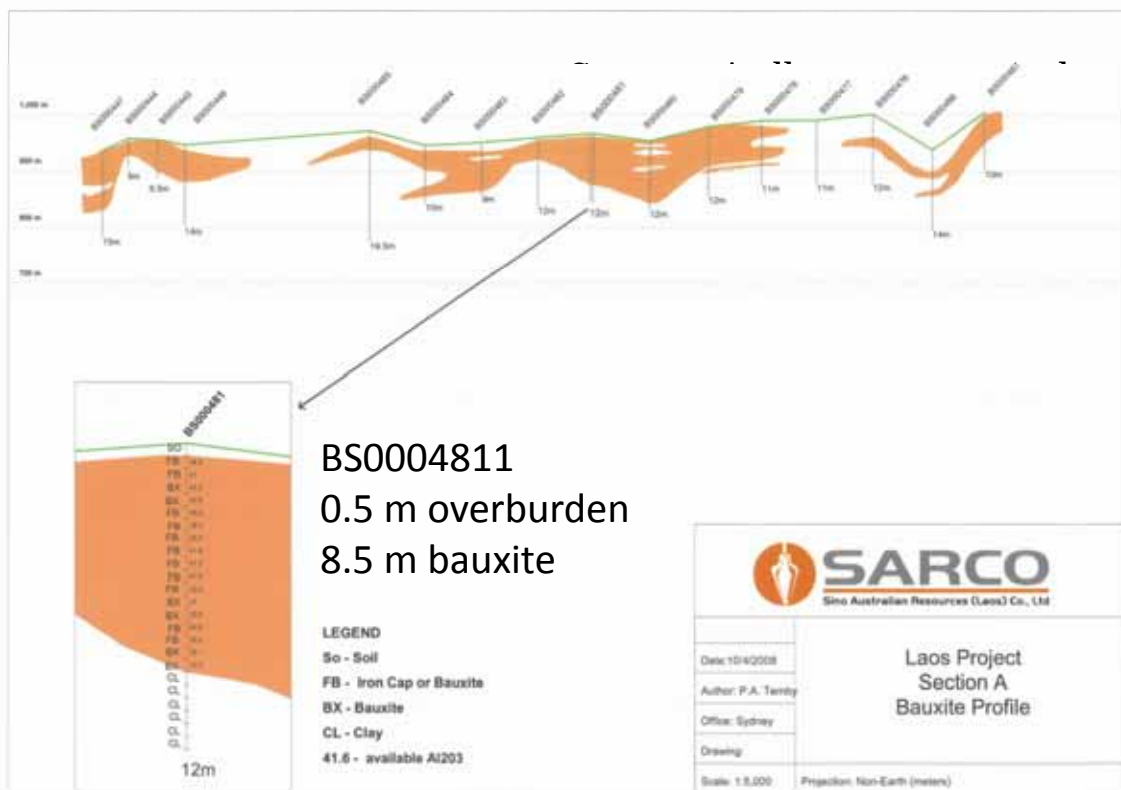
Overview of individual project: SARCO - background



World class deposit potential

- JORC compliant Indicated Resource of 130mt identified at end 2008.
- Combined resource has 32% available alumina, 3% reactive silica, 0.15% organic carbon and very low Ca, Na, K and Mg. This is a potentially world class deposit comparable in grade and quality with the deposits in the Darling Ranges, Western Australia and superior to current domestic Chinese bauxite and to Indonesian bauxite
- Hydrocarbon resources and hydropower potential in the region

Drill Sections



- Section A illustrates typical features of the laterite profile
- The bauxite is not the total laterite profile present
- Bauxite thickness can vary rapidly due to variable Al₂O₃ and SiO₂ content.
- Bauxite is here defined by cutoff grades of >27% Av Al₂O₃ and <5% Rx SiO₂



Our Vision for the Project as a Staged International Development

<i>Planning Procedure</i>	STAGE 1	STAGE 2	STAGE 3
Smelter Production (Aluminium metal)	nil	Nil	0.5Mt
Alumina Refinery (Alumina)	1.2Mt	2.4Mt	4Mt
Integrated Bauxite Mining Network	4.3Mt	8.6Mt	14.4Mt
Minimum JORC Compliant Reserves	300Mt	300Mt	300Mt
Total JORC Compliant Reserves and Resources	600Mt	1,000Mt	1,500Mt
Key Project Milestones to commit to stage	<ul style="list-style-type: none">• Short Term Alumina transportation solution• Tenements secured• Reserves and Resources Confirmed	<ul style="list-style-type: none">• Long term cost effective Alumina transport in place• Reserves and Resources confirmed	<ul style="list-style-type: none">• Low cost Power Generation Solution (capacity, costs, reliability)• Reserves and Resources confirmed
Project Life	50 years Plus		